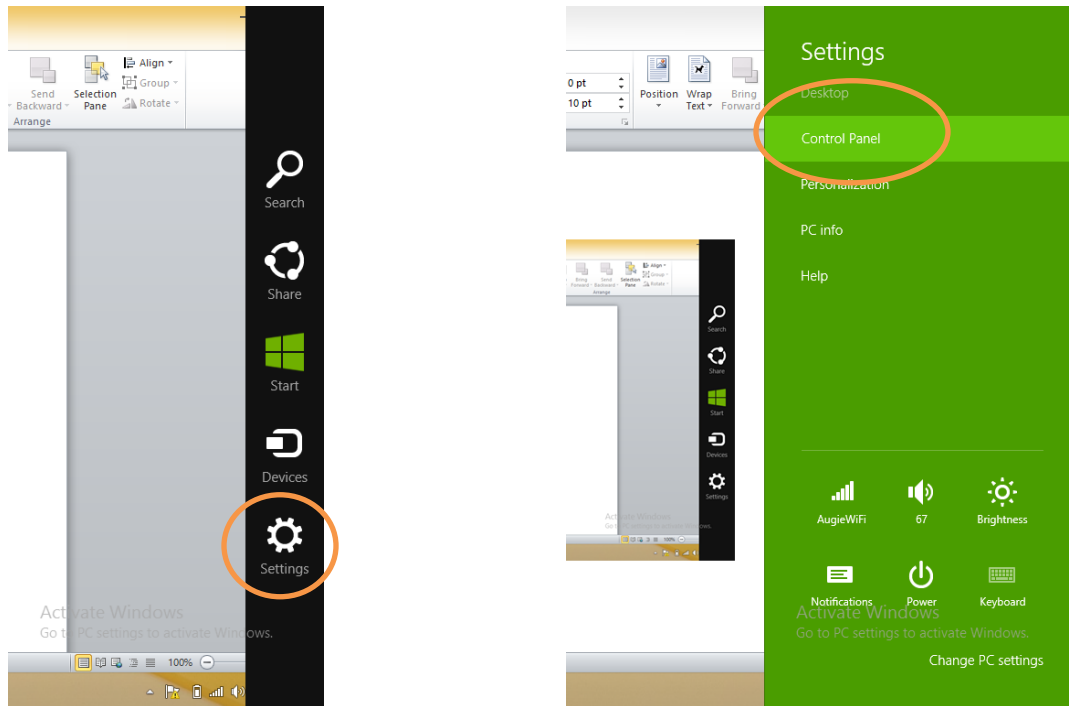


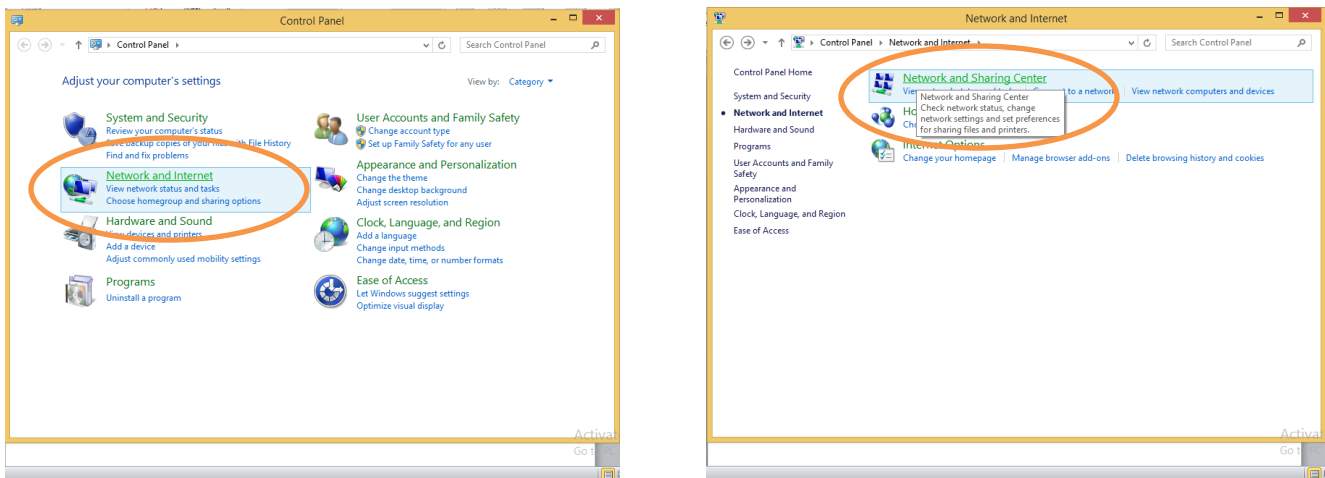
# Configuring Windows 8 for the Augustana Wireless Network

Follow these instructions to connect a Windows 8 computer to the Augustana wireless network.

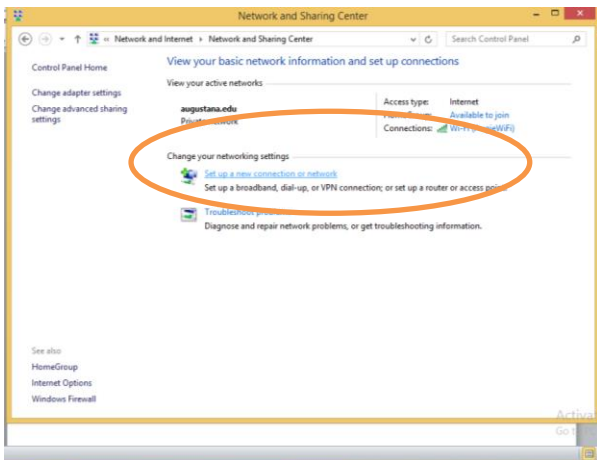
1. Click the Windows (Setting) button and then click **Control Panel**.



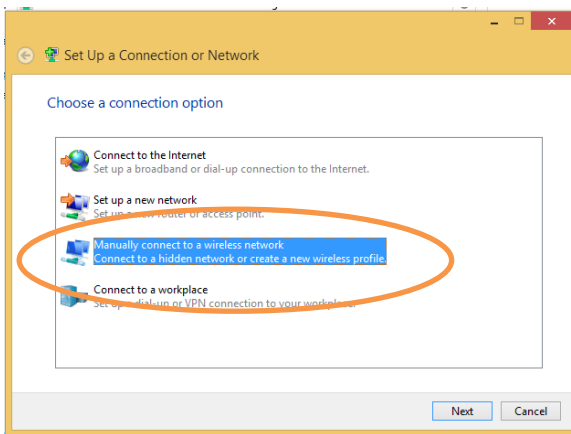
2. Click **Network and Internet** and then click **Network and Sharing Center**.



3. Click **Set up a new connection or network**



4. Select **Manually connect to a wireless network**.

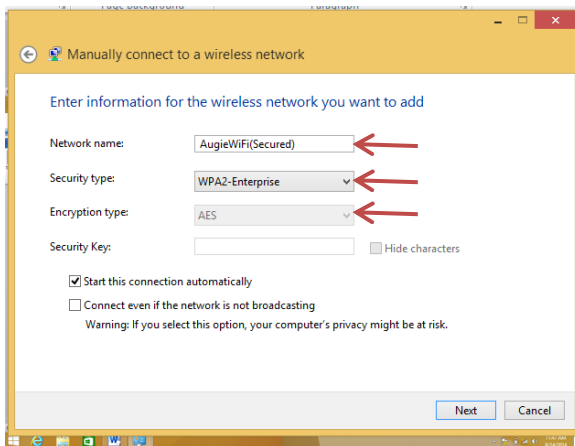


5. Enter the following information:

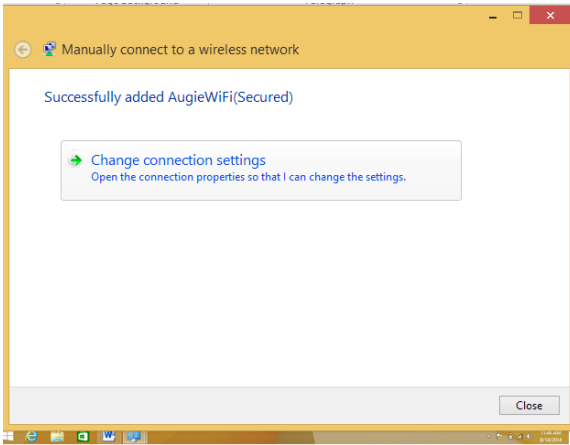
Network name: "AugieWiFi(Secured)"

Security type: "WPA2-Enterprise"

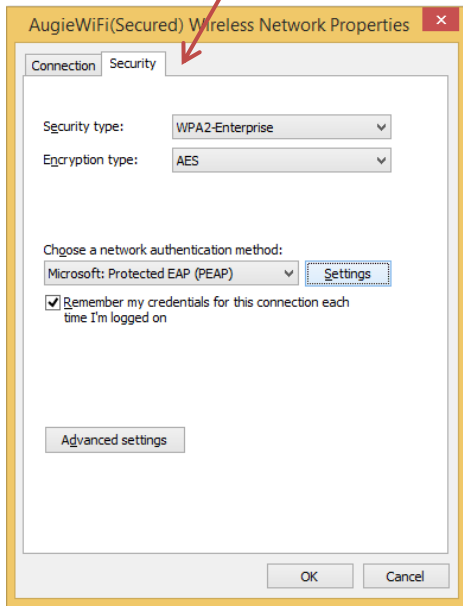
Encryption type: "AES"



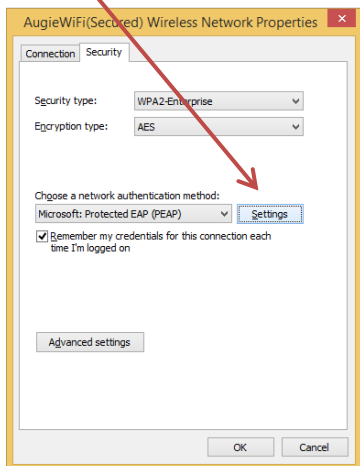
6. Click Next and then click **Change connection settings**.



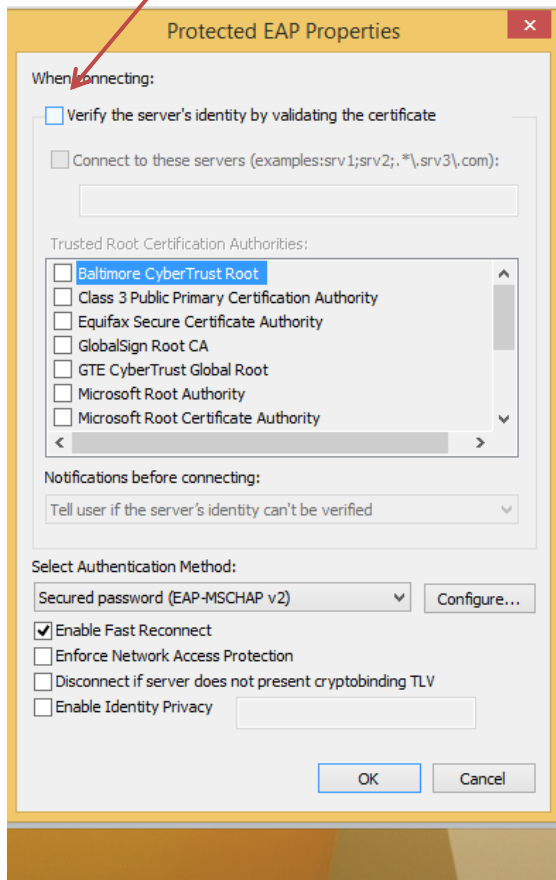
7. Click on the **Security** tab.



8. Click the **Settings** button.

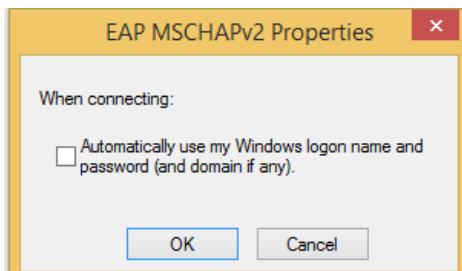


9. Uncheck **Validate server certificate**.



10. Click the **Configure...** button.

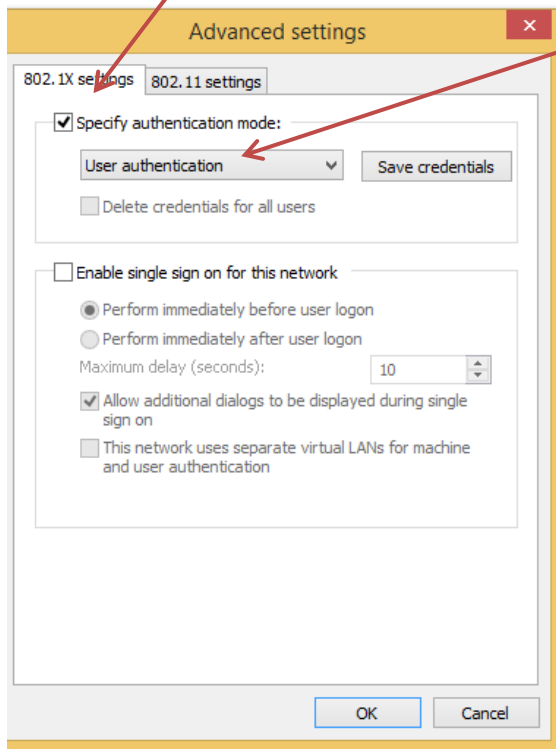
11. Uncheck **Automatically use my Windows logon name and password (and domain if any)**.



12. Click **OK** and then click **OK** again.

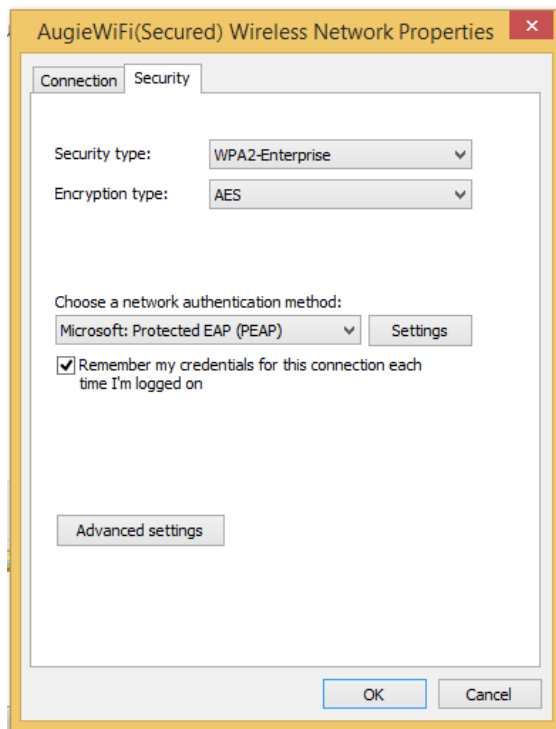
13. Click **Advanced settings**.

14. Check **Specify authentication mode:** and select **User authentication**.



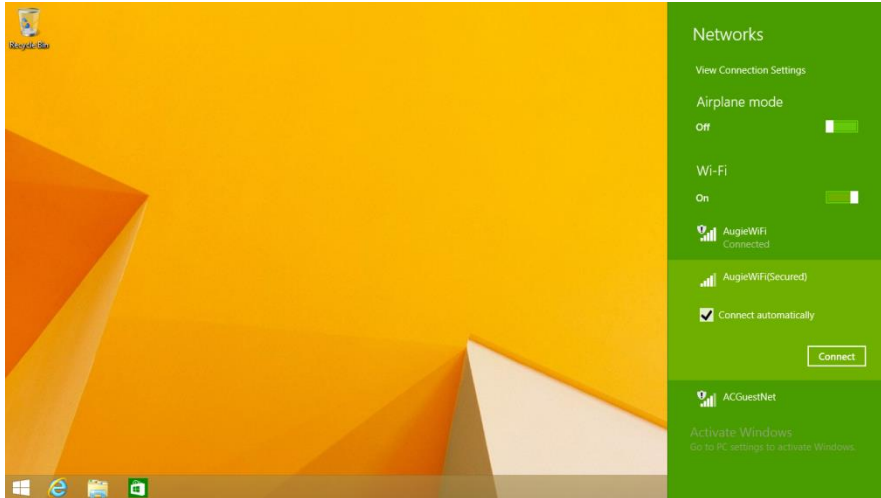
15. Click **OK**.

**Note:** If you want Windows to remember your username and password, check the box next to "Remember my credentials for this connection each time I'm logged on". Note: After you change your Augustana password, you will be prompted to enter your username and new password when you connect to the wireless network.

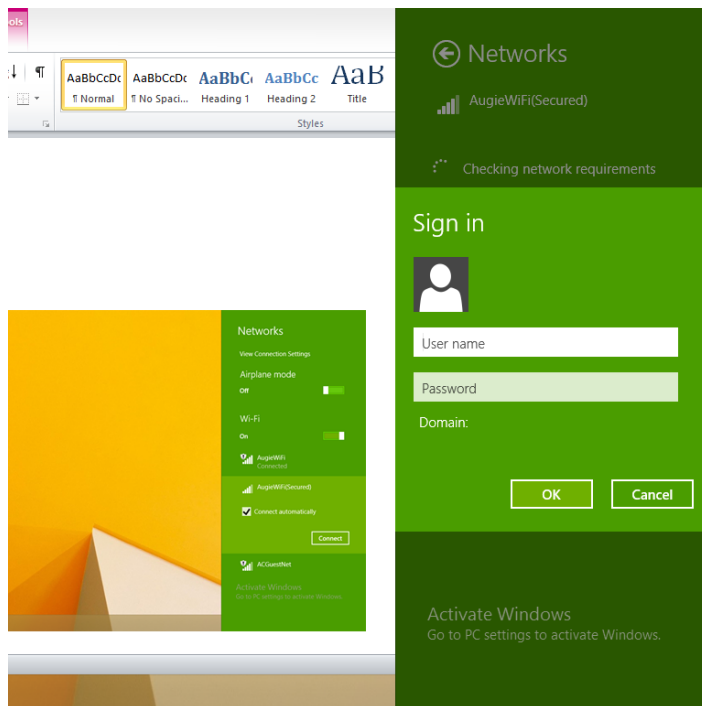


16. Click **OK**, and then click **Close**.

17. Click **AugieWiFi(Secured)** and then click **Connect**.



18. Enter your username and password when prompted and click **OK**.



19. You will be connected to the Augustana wireless network.