


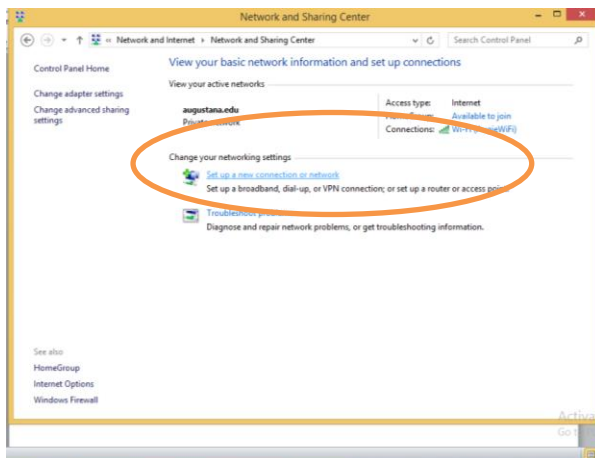
Configuring Windows 8 for the Augustana Wireless Network

Follow these instructions to connect a Windows 8 computer to the Augustana wireless network.

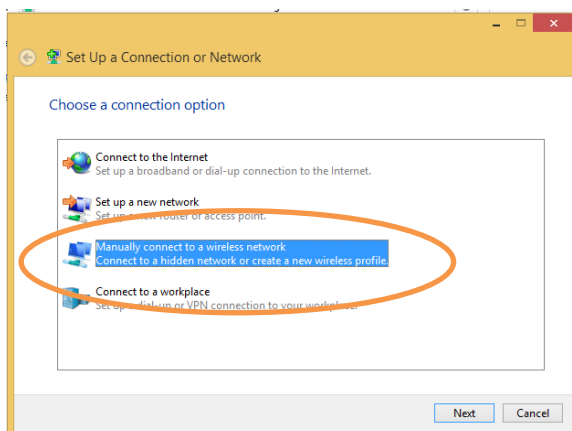
1. Right click on the wireless icon 
2. Open Network and Sharing Center



3. Click **Set up a new connection or network**



4. Select Manually connect to a wireless network.

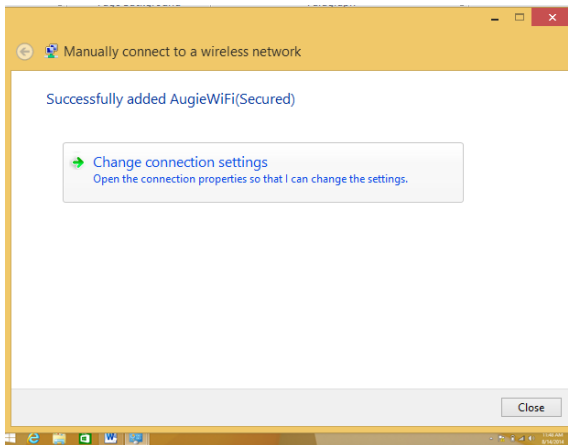
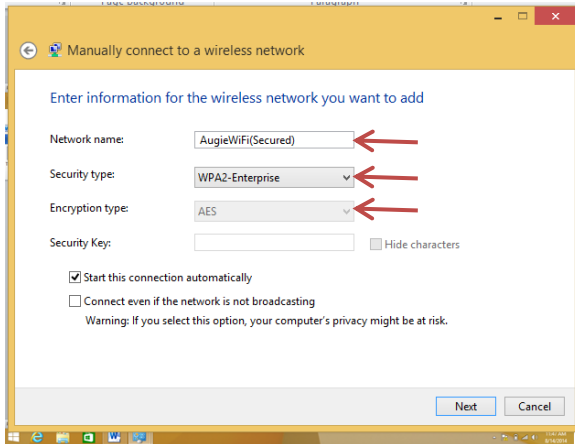


5. Enter the following information:

Network name: "AugieWiFi(Secured)"

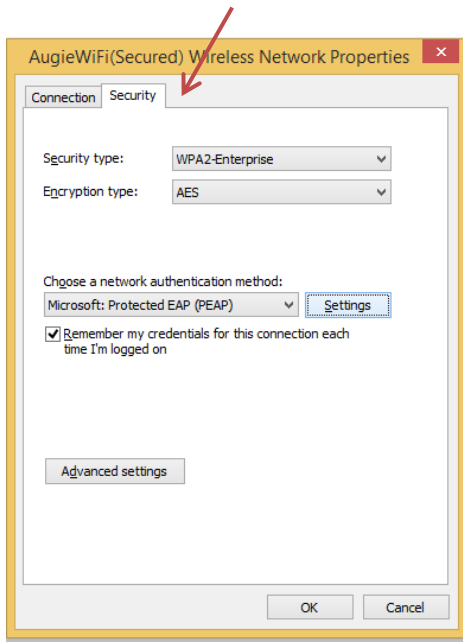
Security type: "WPA2-Enterprise"

Encryption type: "AES"

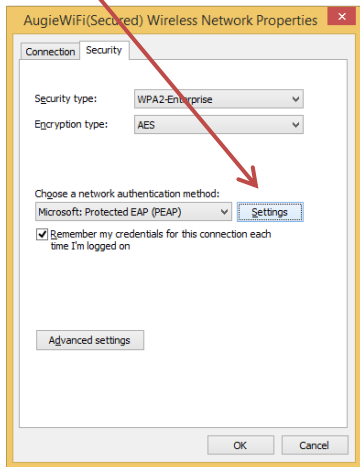


6. Click Next and then click **Change connection settings**.

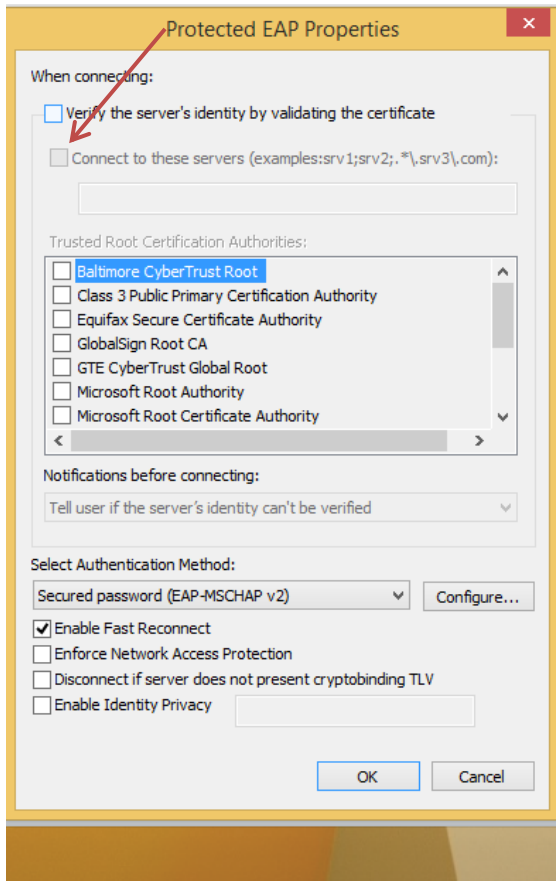
7. Click on the **Security** tab.



8. Click the **Settings** button.

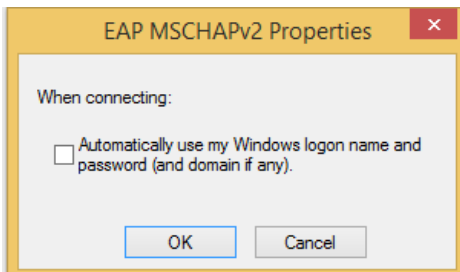


9. Uncheck **Validate server certificate**.



10. Click the **Configure...** button.

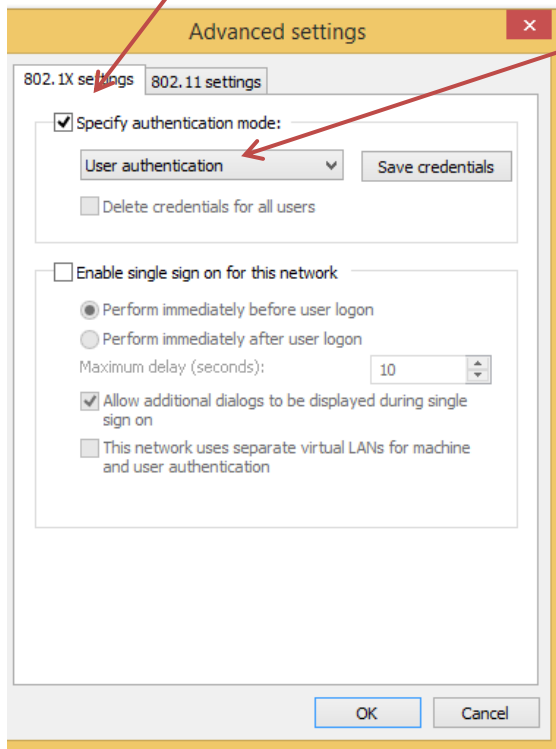
11. Uncheck **Automatically use my Windows logon name and password (and domain if any)**.



12. Click **OK** and then click **OK** again.

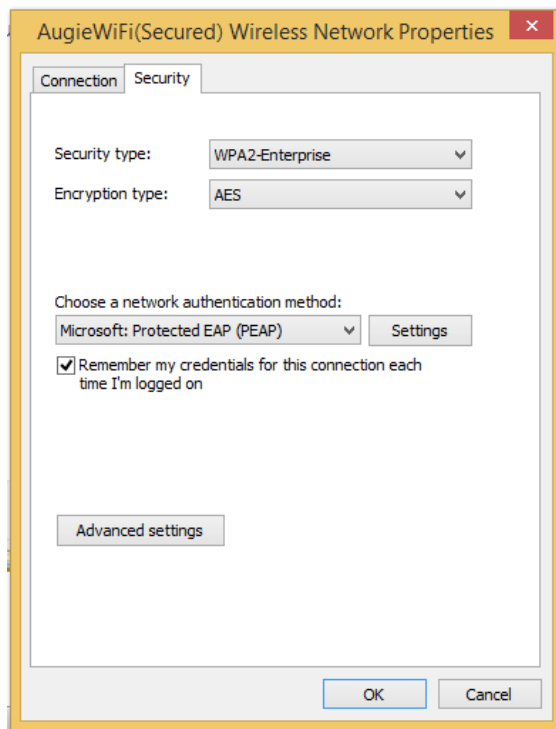
13. Click **Advanced settings**.

14. Check **Specify authentication mode:** and select **User authentication**.



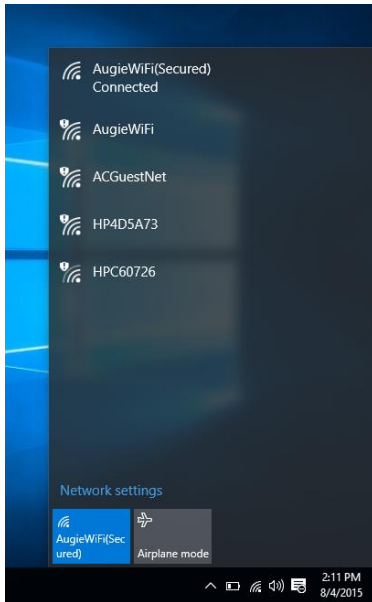
15. Click **OK**.

Note: If you want Windows to remember your username and password, check the box next to "Remember my credentials for this connection each time I'm logged on". Note: After you change your Augustana password, you will be prompted to enter your username and new password when you connect to the wireless network.



16. Click **OK**, and then click **Close**.

17. Click **AugieWiFi(Secured)** and then click **Connect**.



18. Enter your username and password when prompted and click **OK**.

19. You will be connected to the Augustana Secured wireless network.