

WAUG TO BROADCAST TONIGHT

WAUG Schedule

TONIGHT

6:30—Event, news of the day with Bill Lindholm reporting
 6:45—Digestion, after dinner music
 7:00—Listen, music to study by
 7:15—Invitation, anything goes
 7:30—Baton, classical records
 8:00—Segue, popular records
 10:30—Rendezvous, disc jockey show

FRIDAY

6:30—Event
 6:45—Digestion
 7:00—Listen
 7:15—Broadway, show tunes
 7:30—Musical, record programs
 8:00—Segue
 9:00—Party, dance music
 10:30—Rendezvous

SATURDAY

6:30—Event
 6:45—Strut, marching music
 7:00—Surprise, your guess is as good as ours
 7:15—Invitation
 7:30—Tops, Augie hit parade
 8:00—Segue
 9:00—Party
 10:30—Rendezvous

SUNDAY

6:30—Event
 6:45—Vespers
 7:00—Baton
 7:30—Playhouse, dramatic theatre
 8:00—Segue
 10:30—Rendezvous

MONDAY

6:30—Event
 6:45—Digestion
 7:00—Listen
 7:15—Broadway
 7:30—Musical
 8:00—Segue
 10:30—Rendezvous

TUESDAY

6:30—Event
 6:45—Digestion
 7:00—Listen
 7:15—Invitation
 7:30—Baton
 8:00—Segue
 10:30—Rendezvous

WEDNESDAY

6:30—Event
 6:45—Digestion
 7:00—Listen
 7:15—Broadway, "I Was a Communist for the FBI"
 7:30—Intrigue
 8:00—Segue
 10:30—Rendezvous

Station To Climax Lindholm's Labors

WAUG goes on the air tonight.

The radio voice of Augustana College, broadcasting on a frequency of 640 kilocycles with an input power of 60 watts, will begin its broadcasts at 6:30 as Bill Lindholm reports the news of the day.



GOING ON THE AIR FOR THE FIRST TIME AT 6:30 TONIGHT, Station WAUG, radio voice of Augustana College, has been developed under the guidance of junior Bill Lindholm (standing), station director, and senior Gene Koskey, program director. The station will broadcast on a frequency of 640 kc. In the background, under the "Danger, Keep Out" sign, may be seen the \$200 transmitter which Lindholm financed and built himself over the past two years.

Lindholm's 15-minute program, Event, will mark the culmination of a two-year old dream for the 19-year old station director.

As a freshman, Lindholm started working two years ago with little more than an idea, some wire, and some radio tubes. Today it is WAUG.

The station's foundation is the result of his two year labor—the 60-watt transmitter. Lindholm estimates that \$200.00 in materials has gone into its construction.

Broadcasting only to campus dormitories, WAUG is tentatively scheduled to transmit programming every evening from 6:30 until 11. Most of the programs will consist of recorded music.

Located adjacent to the OBSERVER office on the third floor of Student Union, the station will house all its equipment in one room.

Lindholm is no new-comer to the air waves. For the past three summers he has worked as both engineer and announcer at KWBG in Boone, Ia.

Continuity has been written by chief Roald Fryxell, aided by his assistant, Alyce Kagle. John Erickson and Jim Scott will help with the announcing.

Other additions to the staff will be made by Lindholm and Koskey following auditions for new applicants.

Procurement of an adequate record library, originally a big problem for the station, has been at least partially solved. In addition to Decca, which did so earlier this fall, Frumpkin Record Distributing Agency of Chicago has agreed to send WAUG all of their releases. Frumpkin specializes mainly in jazz and Dixieland records.

Establishment of a classical library has been enhanced by personal loans from interested individuals, plus a \$3.00 donation from each fraternity.

Just recently the station received the go-ahead from both Broadcast Music Inc. and American Society of Composers, Authors, and Publishers. These two organizations control broadcast rights to all recorded music.

Augustana Observer

Volume 51, No. 14 Rock Island, Illinois November 13, 1952

One and One Make \$350; Find Mistake in Stu-U Books

The Student Union cafeteria profit for October is smaller than September's, but Stu-U made more in October.

Last month's net profit was \$482.83. After closing September's books Cafeteria Manager Dick Johnson announced a net profit of \$641.98.

Simple subtraction says last month's profit is \$159.15 less. But it isn't.

The reason—the September figure is approximately \$350.00 too high, according to Johnson. An error was made in computing the beginning inventory for September, he said.

Shipments of food totaling \$350.00 were received after the beginning inventory had been taken; the total was not included in this inventory. Neither did the figure appear in the

Student Union cafeteria profit and loss statement for October, 1952.	
Sales and Commissions	\$2,441.04
Deduct Cost of Goods Sold:	
Beginning Inventory	\$1,016.07
Food Purchases	1,320.34
	\$2,336.41
Deduct Ending Inventory	1,034.12
Cost of Goods Sold	1,302.29
Gross Profit on Sales	\$1,138.75
Expenses:	
Sundry (inc. laundry, gas & electric bill)	106.27
Salaries	486.86
Supplies	62.79
Expenses	655.92
Net Profit	\$ 482.83

food purchase column. It did, however, appear as an asset in the ending inventory; it was not deducted in either the food purchase or beginning inventory columns.

This alteration for correction still leaves an approximate profit for two weeks' operations in September of \$300.00 as against the four week October amount.

Any other seeming discrepancy may be cleared up, stated Johnson, by realizing that the labor was wage-free during the first week of September business. The volunteer help saved about \$45.00, he said.

This leaves a total of just \$255.00, a bit over half the October profit figure of \$482.83.

"Let me assure you business is as good as ever; in fact, far better than in any previous year, thanks to an energetic Student Union government which has instilled a new Stu-U spirit into our student body," declared Johnson.

Monday End of Deferred Rush

Next Monday is the deadline for all girls interested in deferred sorority pledging. On or before that day they must turn in their names to Dean of Women Betsey Brodahl.

Bids will be issued by the sororities next Wednesday.

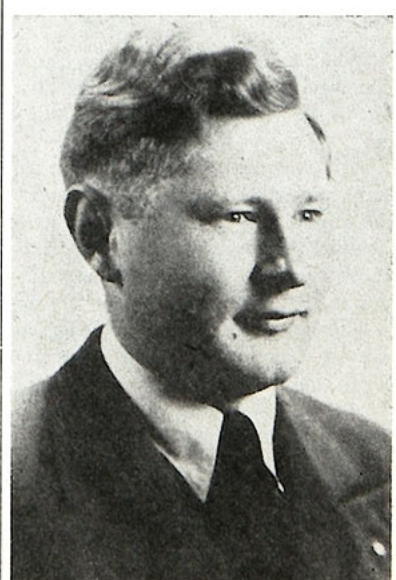
Band Gets Set for Concert; To Tour This Spring

A benefit concert to help raise funds for a spring tour is on the agenda for Director Robert Gaskill's band Wednesday. The concert will begin at 8:00 p.m. in the college chapel.

The program includes: "The Thunderer," Sousa; "In a Chinese Garden," Ketelbey; "Seventeen Come Sunday," Vaughn Williams; "Waltz of the Flowers," Tschai-kowsky; "The World is Waiting for the Sunrise," Lockhart-Seitz.

After the intermission the band will continue with: "Entrance and Procession of the Peers," Sullivan; "Sleepers Wake," Bach; "Invercargil," Lithgow; "Mourning, Noon and Night," von Suppe; and "Manhat-

tan Beach," Sousa. The "Alma Mater" will conclude the concert.



ROBERT GASKILL

Stu-U Spends, May Spend More; Buy Big Freezer

It took Student Union Board of Control one hour and 20 minutes to spend \$300.00 last Tuesday night.

Two hundred and fifty dollars of that amount will purchase a new freezer for the Stu-U cafeteria. A newly-reconditioned freezer, the eight-compartment unit will be used mainly for storage purposes.

To be purchased from Peterson Fixture Co., the freezer will probably be placed in the Union basement. Frozen meat and other items now stored in the cafeteria room freezer will be moved to the basement unit, according to Dick Johnson, cafeteria manager.

It took the board 10 minutes to reach this decision.

Previously, it had taken 25 minutes of bickering before voting to sponsor a Christmas party at the Crippled Children's Foundation.

Debate centered around the question of whether such sponsorship was within the scope of Student Union's constitutional purpose and, if not, whether such sponsorship would create a precedent for going beyond the bounds of the constitution.

Apparently deciding it was within their power to do so, the Board unanimously voted to allow the committee in charge to

Continued on page 4

Tryouts Monday For Play, 'R. U. R.'

Tryouts for the next Alpha Psi production which is to be Karel Capek's "R. U. R." will be held in Rm. 40 of Old Main at 4:00 P.M. on Monday and Tuesday, November 17 and 18. All regularly enrolled students at Augie are eligible to try out for this play which has a large cast.